



IGNITION

DStv CHANNEL 189

2024

A PROUD BRAND OF ARENA HOLDINGS

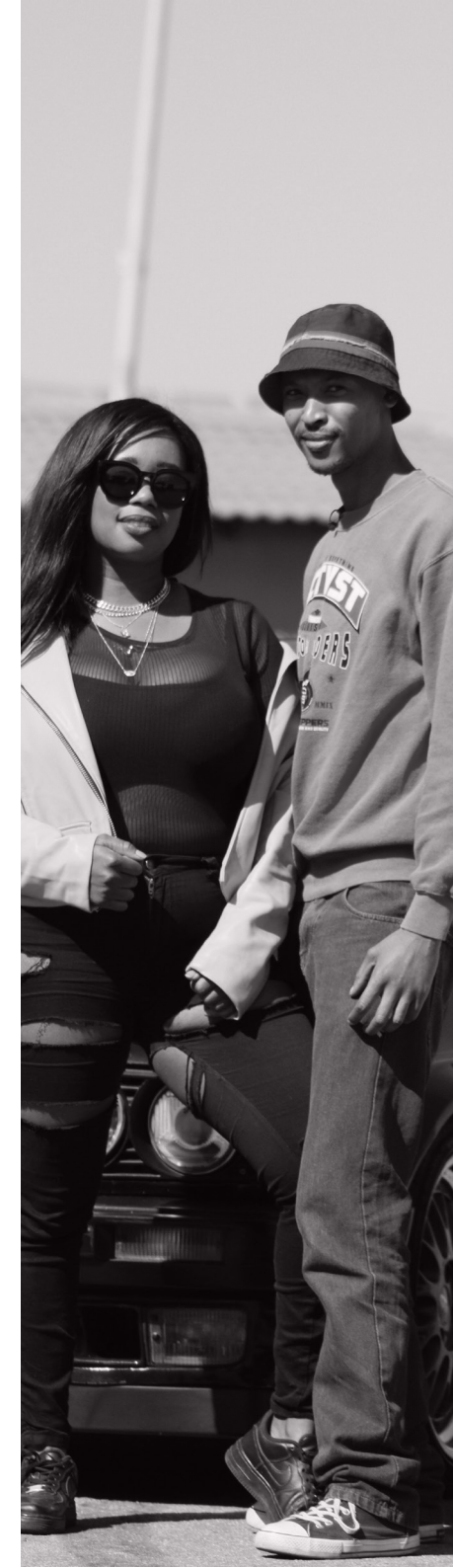
IGNITION

Broadcasts 24/7 on DStv Channel 189

The Channel reserves the right to make programming changes

The average spot on IGNITION is R3 750

CHANNEL	TIME BANDS	SEGMENTS	30" RATE
IGNITION 189	SATURDAY		
	24H00 - 08H00	EARLY MORNING OFF PEAK	R3 000
	08H00 - 24H00	ALL DAY WEEKEND PRIME	R4 500
	SUNDAY		
	24H00 - 06H00	EARLY MORNING OFF PEAK	R3 000
	06H00 - 24H00	ALL DAY WEEKEND PRIME	R4 500
	MONDAY TO FRIDAY		
	24H00 - 18H00	ALL DAY OFF PEAK	R3 000
	18H00 - 23H00	PRIME TIME	R4 500
	23H00 - 24H00	LATE NIGHT OFF PEAK	R3 000



TERMS AND CONDITIONS

1. All advertising spots longer or shorter than 30" will be charged pro-rata.
2. Advertising spots bought in specific programmes will carry a 20% loading.
3. All schedules are subject to availability of airtime at the time of booking and broadcast.
4. The Broadcaster reserves the right to alter scheduled programming.
5. The content of all advertising messages is subject to the approval of the Broadcaster.
6. The Advertiser indemnifies the Broadcaster for damages resulting from any advertising material correctly aired or displayed by the Broadcaster.
7. Advertising only to be used to promote the products and services of the Advertiser and contract is non-transferable and/or assignable.
8. All prices shown are NET to Advertiser. All prices quoted exclude VAT and Agency Settlement Discount.
9. Advertiser is subject to the Broadcaster's standard policy for credit approval and management.
10. In the absence of credit approval, payment will be required monthly in advance.
11. Proof of payment must be e-mailed, no less than 10 working days prior to first broadcast.
12. A 50% cancellation fee will apply within 10 working days of flighting.
13. Please note that a 100% cancellation fee will apply if the TV plan is cancelled after the campaign has already started.
14. The channel will not be held responsible for any circumstances beyond their control.
15. E & OE – Standard errors & omissions.
16. STANDARD ARENA BROADCAST (PTY) LTD TERMS AND CONDITIONS APPLY, REFER TO WWW.TMADROOM.ARENA.AFRICA

NEW FTP Address and Material Format

Material delivery options:

1. FTP Details:

- Host Address: ftp2.avusa.co.
 - » Username: BlackstarTV
 - » Password: TVCloud2018
 - » Directory: Commercials

2. USB / Hard Drive

3. Web Transfer

- We can access most online transfer mechanisms, for example Dropbox, WeTransfer, etc.

4. Via Adstream

- Supply formatted as per various options on Adstream White Pages
 - » Contact traffic.za@adstream.com for details

5. Format:

- Video Material: Television broadcast quality
- High Definition (HD)
 - » HD 1080 (High Definition)
 - » 16:9 Full HD (1920 x 1080)

6. Compression Options:

- H.264 – 25 frames per second
- mov

Physical Address:

- Arena Holdings
Hill on Empire
16 Empire Road
Parktown

Contact:

- Rolette Naidoo
naidoor@bdtv.co.za
011 280 5822 or 078 053 7216

Material Deadlines:

- -5 working days prior to first flighting



TV SALES CONTACTS

Sales Executive	Claire Smith	082 579 0894	smithc@bdtv.co.za
Sales Executive	Adèle Rhodes	082 456 3317	adeler@bdtv.co.za
Sales Executive	Themba Motaung	073 203 5417	motaungt@bdtv.co.za
Sales Executive	Brenda Stanley	082 557 5303	stanleyb@bdtv.co.za
Sales Executive	Andre Stadler	082 326 6814	astadler@bdtv.co.za
Western Cape Sponsorship and Advertising Sales	Kim Penman	083 733 5187	penmank@bdtv.co.za
TV Sales Co-Ordinator	Rolette Naidoo	078 053 7216	naidoor@bdtv.co.za

